



**MANITOBA BAPTIST ASSOCIATION
ANNUAL MEETING**

OCTOBER 14-15, 2016

ROWANDALE BAPTIST CHURCH

TABLE OF CONTENTS



Together On Vision	3
Spiritual Development of our leadership	3
Evoking and Equipping Missional Development	6
Church Planting Ministry Multiplication	8
2016 Business Meeting Agenda	12
Call To Order and Seating of Delegates	13
Minutes of 2015 AGM	14
Regional Ministers Report	18
Regional Leadership Team Report	21
Moderator's Report	22
Financial Report	23
Balance Sheet on December 31, 2015	24
Statement of Income and Expenses	25
Contribitons to the association by church	26
Association Trends	27
2017 Proposed Budget	28
Meadowood Manor Chaplaincy report	29
Meadowood manor foundation report	32
Women's Ministry	35
Women's ministry Budget/Actual	38
Women's Ministry Income/Expenses	39
NAB Conference Executive Director	40
Church Investors Fund Report	42
Wellman Lake Bible Camp	43
Taylor Seminary & College	44
Souix Falls Seminary	46

TOGETHER ON VISION

The leadership of our associations, prayerfully joining with a global emphasis of our NAB family of churches, invite you to be a part of what God is calling us to be and live within His Word. We are called to step out by faith and surrender to His work in our lives that impacts our life actions. Let's join together on vision and mission!

SPIRITUAL DEVELOPMENT OF OUR LEADERSHIP

We often find ourselves traveling to the beginning of God's revelation to us in Genesis and the beginning of the world as we know it. In Genesis 1 we discover we were created to be a part of God's Kingdom. A Kingdom where all things begin and exist with God ruling, reigning, creating and graciously giving life to His creation including mankind, made in His image. Made to be in a unique and beautiful relationship with the Creator as rightful authority of life, our lives, and all creation. Genesis 1-2 is such a profound display of how life can be with God as Sovereign. We see God's providing for man and interacting with His created. We go back to this reality of truth for we live in a confused and rebellious world that has placed mankind on the throne and seen the effects of our rebellion against the King.

Even as mankind rebelled against God, He already had a plan for His Kingdom and His rule. Yes, He allowed the natural consequences of rebellion to be rolled out, but He also knew He was Victor and would provide the path through Christ for redemption. For all who have rebelled, salvation and reconciliation with God is offered by faith, surrendering our lives to His rightful Lordship.

His children, rightful disciples, are the application of His life transformation to be who we were created to be. While we journey this world that is "sin affected" our Lord calls us to allow His supernatural transformation of our yielded lives. We yield to His spiritual development and sanctification. The battle rages over our lives as the evil one hates us surrendered to the

Almighty One and distracts, discourages, depresses and attempts to draw us away to the selfish world he has created with false gods and false pleasure.

As spiritual leaders, it is our Biblical goal to encourage each other, guided by His Spirit, to spiritually develop as we:

1. Remind ourselves of the truth of who God is in all His beauty and glory and submit continually to His rightful authority in our lives;
2. Resolve and challenge each other to fix our eyes on God alone and allow the things of this world to grow strangely dim in the light of His glory and grace;
3. Live as His body that are His instruments to minister to each other in the transformational process.
4. Enter into the spiritual disciplines modelled by our Christ, led by the indwelling Spirit, to grow into His image and as He is a missionary God be on mission to used to advance His mission.

So we surrender to God's spiritual development of our lives and commit ourselves to the Biblical mandate to be used of God to keep watch, be active in and guard over the spiritual development of His leaders and His body. As a leader has a vibrant relationship with the Father so will their effectiveness increase as the image of God is lived out in ministry to this world on behalf of His Kingdom.

INTERACTING WITH GOD AND EACH OTHER

What evidence do you see in your own life when you are walking with God?
What are the main factors that contribute to your walk with God?

What are some ways that others can encourage you in your walk with God?

Who is someone that you can encourage in their walk with God?

OUR NEXT STEPS AS A REGION

Retreats for Ministry Staffs and spouses

Regional Minister contact with ministry staff to "check up" on spiritual development

Cluster interaction around the book "The Imperfect pastor" by Zack Eswine

Encourage local church “leads” to "check up" with there teams to see how they are growing spiritually.

WHAT ARE YOUR NEXT STEPS TO SEE INTENTIONAL SPIRITUAL DEVELOPMENT?

As an individual ...

As a church leadership ...

EVOKING AND EQUIPPING MISSIONAL DEVELOPMENT



There has been a general observation recently made. It is estimated that 40% of the North American population is either participating with a religious group, are open to interacting about spiritual issues, or are seeking a place of spiritual help. This group is being called the “Red Ocean”. Why “Red Ocean”? It appears the majority of church ministries are in a feeding frenzy doing whatever is necessary and popular to engage and get a commitment from one of these 40% of the population — including “doing what ever is necessary” to keep those who are attending their church. The remaining 60% of the population, known as “Blue Ocean” are individuals who are disinterested in spiritual matters, disillusioned with spiritual groups and are not seeking spiritual health.

Scripture asserts the truth that God desires that none would perish and that all would come to faith in God through Christ and surrender to God’s rightful reign in their lives. God is a missionary God who seeks and saves the lost. God, the Son exemplified incarnation, living the fact that God is for us, with us and calls us to surrender to Him indwelling us as Christ the Lord.

Being missionally evoked is the invitation and challenge that we accept the reality that we are not just to talk about being a missionary people but we are to be a missionary people. We are to live and declare the Gospel consistent with the character (theology) and mission of our God.

How then shall we live? As disciples of Almighty God, He transforms our lives and calls us to be on mission for Him ... being for people, with people, one of people while inviting others to be the rightful King of their lives and live as He created us to be.

Practically, this is lived out first and foremost “theologically” not programmatically. We continually look to who God is and how beautiful He is. As He transforms us we see others as He does with a desire translated into reality that loves others as God loves. Lives are transformed and God is glorified ... and yes His Kingdom is advanced — into the Blue Ocean where indifferent find life and disinterested come to find purpose in a Holy God.

INTERACTION

Describe ‘missional’ in your own words.

Has your heart been stirred to be missional in your ministry?

If you haven't felt stirred to be more 'missional', what are the main roadblocks in the way?

OUR NEXT STEPS AS A REGION

Weekly sharing, via the NPRegion website, insights into the character of God. We submit to the character and mission of God who transforms us into His likeness. We then are invited to join Him on mission.

See others as God sees them with God's desire that all would know and live the Gospel.

That His missionary children would incarnate into their communities.

Invitation for teams to join the Ethos experience of learning to transition ministries to bring missional

WHAT ARE YOUR NEXT STEPS TO BE ON MISSION?

Individually ...

As a ministry ...

CHURCH PLANTING MINISTRY MULTIPLICATION



The New Testament begins with 4 accounts of the coming of Jesus declaring the Kingdom of God which “is at hand”. Jesus called people to take up their cross and follow Him. Jesus, the Christ, accomplished His work of salvation on the cross and rose from the dead. Before He ascended to heaven, He commissioned His followers to go, live and proclaim the Good News of the Kingdom to all. The book of Acts explodes with the indwelling of the Holy Spirit in Christ’s disciples and as they declare this Gospel, people respond to the message by faith, they surrender their lives and we see the Kingdom of God spread to the known world and communities of disciples, the church, emerges all over the globe.

There is a ministry network today that is known as “Acts 29”. It is a group of Jesus disciples, who are on mission for the Kingdom and planting churches — the story of Acts forging ahead today church planting! Acts 29 ... the next chapters, including today, of the expansion of the Kingdom of God!

As we look around the room at this association meeting we see evidence of ministries that were planted. Some through seasons of immigration, to other churches which were planted through mother churches in partnerships with associations who desired to see a Gospel presence established in communities. The stories may vary but the evidence of Kingdom advancement is evident.

As God transforms our lives and we are a missional people, others will come to salvation through faith in Jesus Christ. As bodies of Christ grow they have the potential of multiplying to be on mission to other groups of people. We see that evidenced, in our region, with a body multiplying from central Fargo to a second plant in southwest Fargo. We also see it in the reality of West End Alive, which reaches out to a people group in Winnipeg. We also see the vision of a ministry who hopes to plant a missional group in a neighboring town to form a “beachhead” of Gospel declaration of those on mission to love their communities as God has exemplified. The Kingdom advanced as we see God multiply ministries.

A question emerged recently: Biblically, is it an option or a mandate for His people to be a part of ministry multiplication through planting?

INTERACTION

In your estimation, what is the general feeling about ‘church planting’ in your church?

How have you, or your church, been impacted by ministry multiplication?

Have you felt God leading you to pursue ministry multiplication?

What step could God be calling you to be a part of in church planting / ministry multiplication?

OUR NEXT STEPS AS A REGION

Form a ministry multiplication team and network to encourage and resource ministry multiplication.

Prayer movement to ask the God of the harvest to send forth workers.

Provide training opportunities through residencies to train ministry multiplying planters.

WHAT ARE YOUR NEXT STEPS?

Individually ...

As a ministry ...

**ADDITIONAL
NOTES**





2016 BUSINESS MEETING AGENDA



Welcome & Opening Prayer

Seating of Delegates – page 13

Appointment of Special Committees: – page 13

- Ballot Committee
- Scrutineers' Committee
- Resolution of Thanks Committee

Minutes of October 17, 2015, AGM – pages 14-17

Nomination of 2017 Officers

Financial Report – pages 23-26

Presentation of 2017 Budget – pages 28

Regional Minister Report – pages 18-20

Reports

Election of 2017 Officers

Other Business

Resolution of Thanks

Scrutineers' Report

Next meeting:

Closing Prayer

CALL TO ORDER AND SEATING OF DELEGATES

Church	Eligible Delegates	Eligible Pastors	Present
Elim, Beausejour	3	1	
First, Minitonas	8	1	
Moosehorn, Moosehorn	3	1	
Emmanuel, Morris	5	1	
Oakbank, Oakbank	5	1	
Grace, Ochre River	6	1	
Whiteshell, Seven Sisters	5	1	
Temple, Swan River	7	2	
Whitemouth, Whitemouth	3	1	
Abundant Life	5	1	
Fort Richmond	3	1	
McDermot Avenue	8	2	
Mission	6	2	
New Life Ministries	3	1	
Rowandale	7	2	
Waverley	7	3	
Whyte Ridge	7	4	
Meadowood Manor	0	1	
Meadowood Foundation	1	0	
Camp Nutimik	1	0	
Wellman Lake Camp	1	0	
Regional Minister	0	1	
Guests	0	0	
Executive	6	0	
TOTAL	93	28	0

APPOINTMENT OF SPECIAL COMMITTEES

Balloting Committee	Scrutineer’s Committee	Resolution of Thanks

MINUTES 2015 AGM



Meeting was called to order by Barry Thiessen at 2:26, October 17, 2015

A total of 64 delegates were seated

MSC TO ACCEPT THE DELEGATES AS PRESENTED.

Mark Woods was appointed as Secretary in place of Dave Henkelman who was absent due to illness

Special Committees

Ballot Committee: Herb Adam, Ken Schroeder

Scrutineers: Brad Quiring, Allen Unger

Resolution of Thanks: Herb Adam

Appointment of committees was accepted

Minutes of 2014 Meeting

Summary of 2014 meeting minutes were presented by way of the Annual Report Booklet

MSC TO ACCEPT THE 2014 MINUTES

Proposal by Al Donald to suspend the agenda and deal with the Bylaw Amendments before the election of officers. This was agreed upon by the delegates.

Business:

By-law Amendments

Al Donald presented the amendments to the MBA By-laws.

- There were some questions and discussion

MSC TO ACCEPT THE AMENDMENTS TO THE MBA BYLAWS AS PRESENTED BY THE MBA EXECUTIVE

Elections for 2016/2017

The nominees for 2016/17 were presented.

- Moderator – Barry Thiessen
- Secretary – Dave Henkelman
- Treasurer – Al Donald
- Women’s Ministry rep – Daphne Keck
- 3 Members-at-Large – Grace Elke (no others nominated)

Financial Report

Al Donald presented the Financial Report and moved the acceptance of the report

MSC TO APPROVE THE FINANCIAL REPORT AS PRESENTED

2016 Budget Presentation

Al Donald presented the 2016 budget

The major change in the budget is that the MBA Executive has entered into an agreement with Mission Baptist Church to fund the church extension project “West End Alive” in the amount of \$30,000.

The Ministry Wives Retreat is entered as a separate line item in the budget on the advice of the Association auditor.

Pathway Camp Ministry has been included in the budget in accordance with the request to do so at the 2014 MBA AGM. These funds are available for churches to access in order to do summer ministry with Pathway.

Question was directed to NAB Executive Director Dan Hamil regarding whether the MBA budget reflects the goals and mission of the NAB as a whole. Answer: the NAB would like to encourage Associations to move more into areas of church planting and this budget reflects that

We need to make sure that our budget adequately reflects the desire of the NAB and MBA to see our churches move into missional endeavours. The Regional Minister fulfills this need as well. The Executive is willing to consider individual requests for funds on a case-by-case basis.

MSC TO APPROVE THE 2016 BUDGET AS PRESENTED

Reports

Central Baptist Church

- Barry Thiessen gave an update on the status of Central Baptist Church. The church has closed down and the assets of the church have been placed under the care of the MBA Executive in the hopes of planting a new church in that community in Winnipeg.

Regional Minister – Gordon Stork

- Thanked Association for a warm welcome into his work as RM in the MBA
- We want to participate more between Associations (NCA and MBA)
- We need to do a better job of communicating between churches in our Associations and also between the leadership and the churches.
- We want to increase communication between ministry spouses.
- He is looking forward to working with churches and pastors over the next year and beyond to increase the kingdom of God in Manitoba.

NAB Executive Director – Dan Hamil

Four things the NAB Conference wants to develop:

- 1 – to re-affirm our identity as a missionary people
- 2 – to restore our commitment to the spiritual vitality of our pastors
- 3 – to re-establish a passion for international missions
- 4 – to renew our investment in younger leaders

Other Reports

Other reports in the MBA booklet were noted. There were no further questions or discussion about the reports.

**MSC TO ACCEPT THE REPORTS OF ALL ORGANIZATIONS
AND MINISTRIES**

Election of officers for the MBA Executive

**MSC TO ACCEPT THE OFFICERS AS NOMINATED
FOR THE EXECUTIVE.**

Other Business

Allen Unger made an announcement about a Promise Keepers seminar to be held at Grace Baptist Church.

Taylor Seminary is holding celebrations in Swan River and also in Winnipeg for their 75th anniversary.

Resolution of Thanks

Herb Adam led the delegates in a time of prayer for appreciation of the work of our Conference and Association leaders and blessing for the future.

Scrutineers Committee

Allen Unger and Brad Quiring affirmed that the minutes accurately reflect the proceedings at the Annual General Session of the Association

MSC TO ACCEPT THE SCRUTINEERS REPORT

REGIONAL MINISTER REPORT

Another year has quickly transpired and we find ourselves gathering “together” once again. God is, true to His character, at work in powerful ways in a world that is in desperate need of Him. Many miles and conversations have been completed in this last year and through it all, I want to personally thank you for your welcoming spirit and the expressions of partnership. Once again, always be mindful that God is at work and we are grateful for the opportunity to partner together on mission.

Let me share with you three broad expressions within this annual report:

1) STRATEGICALLY PARTNERING TOGETHER AS A FAMILY OF CHURCHES

As we joined with NAB leaders, from throughout our continent and globally, God led us to see three areas of emphasis within our 8 purposes. They include:

5. Spiritual formation of our leaders!
6. Evoking and equipping missional development in our ministry!
7. Church planting and ministry multiplication!

I encourage you to read the text, questions and next steps for each of these areas from within our “annual meeting schedule and notes”. We desire to be on mission together to advance His Kingdom and give God the praise and glory He alone deserves.

2) COMMUNICATION OF REGIONAL INFORMATION

- Regional Minister interactions

It has been a joy to spend time with you in a patterned manner. I will continue to connect with our ministry staff leaders quarterly, with congregations on Sunday's on a regular rotation, and continue to extend the invitation to you to meet with your Boards. Remember I come to interact with you upon your invitation and am here to support and encourage God's work among you and encourage you as we join together to advance His call!

- Pastoral vacancies and the need for pastors and church planters

We are praying and working through double digit pastoral vacancies in our region. Although we have seen God place many in vacant positions, more vacancies have emerged. We would ask you to join in prayer that God will provide pastoral leadership for the vacant positions. Please also pray for God to raise up pastors who will plant new ministries. Specifically I would ask that your church place the prayer request for pastoral leadership and church planters once a month within your prayer section of your bulletin alongside the ministry of the week.

- Spiritual formation events for ministry staff and their spouses.

We will be offering annual retreats for ministry staff, for ministry staff spouses, and days of spiritual retreat. We encourage leaders to take advantage of these opportunities.

- Website

Our regional website has been launched with the goal of making it assessable and encouraging for all those in our region and beyond. In addition to the usual elements of calendar items, event descriptions, and ministry resources you will find a section inviting you weekly to hear from our spiritual leaders concerning what they continue to learn about God and His character and greatness. You will also be encouraged by the "God at work" section that will tell you stories concerning God at work in our region. We would invite all of you to submit testimonies to the RM office at pastorgordonstork@gmail.com of what God is doing in your life and church. Share the web site with your church family and make it a regular stop during your internet time.

3] SOME PERSONAL EXPRESSIONS ... FROM MY HEART.

I come to you, called of God to be your Regional Minister, as a spiritual leader to encourage and challenge you. Any authority I have is ultimately from the Father in serving you. There are three areas that God continues to place on my heart:

- We are called to be a missionary people who live and proclaim the Kingdom of God through the Gospel. God's Word communicates the urgency of this call. All God's children are to be communicating His

glory and message of salvation. God is urging you to love those you come in contact with and proclaim His Good News. The fields are white! The time is short!!

- We are seeing a global cultural trend of tolerance and passivity to spiritual matters. Be reminded that God has revealed His Word to us to show us who He is, how we are to live in relationship to Him and how we are to be the people of God. It's easy to shake our heads at accounts of Biblical indifference and disobedience but I am personally and in community challenging myself and my siblings in Christ to live obediently and faithfully for Him. This is a mandate from the King! Obey Him!
- Finally, I would encourage you to engage with spiritual eyes, within every moment, to see and rejoice in the beauty and glory of God in heartfelt worship and constant joy. God is glorious and continue to grow and live for Him.

It is my privilege to serve you. Let's continue to partner in ministry for His glory. If you have any questions or interaction you would like to have with me, please be in touch with me.

For His Glory

Gordon Stork

Northern Plains Regional Minister
 4008 High Creek Road - Bismarck ND - 58503
 Email: pastorgordonstork@gmail.com
 Phone: 701.751.7676

REGIONAL LEADERSHIP TEAM REPORT



It has now been my privilege to be part of this group for several years. It is our task to be the first line of accountability for our Regional Minister. This gives our Regional Minister a group to talk to beyond the Association executives and through the members of the group and the local executives a place to talk strategy and focus. We are pleased with the number of churches that Gord has attended and the progress he has made in helping our churches to move further into missional thinking and action. Pastors are well aware that they have seen Gord more than once in the past year. In cases where church conflict or pastoral searches have been taking place, you will have had contact with Gord even more. If you have not seen Gord very much, do not panic. The list of churches he has not been at is very small and you will be hearing from him very soon. Maybe even before this report reaches you before our annual conference. The team consists of two representatives from each of the Associations making up the Region. At the present time members are myself and Al Donald from the Manitoba Association; and Ethan Johnson and Jim Schnabel from the North Central Association. We meet with him regularly by conference call and twice a year face to face in Fargo, ND. Our last face to face was August 19 and 20. At this meeting we did our yearly review and evaluation of Gordon's ministry. Since this was the first full year of his ministry, the regional team did the evaluation. Next year, we will again be asking leadership of churches to be part of this evaluation through the team.

If you have questions regarding the role of this group or questions regarding the ministry of our regional minister, please feel free to contact us. We will do our best to answer your questions and concerns.

Dr Barry Thiessen, for the Regional Leadership Team

MODERATOR'S REPORT OCTOBER 2016



Every year presents its own supply of challenges and blessings. This year was no exception. I want to share some of them with you so that can pray with us for God's guidance and direction in the coming year.

For several years now we have been serving with a slate of officers less than full. The issue was further felt this year when our secretary left us for glory. While our thoughts are with Heidi Henkelman on the loss of Dave, Dave's untimely death left a huge hole in our executive. Dave's ability to take minutes, keep the paperwork straight and ready on time as well as serve on the Regional Leadership Team demonstrated his gifting and his practical use of those gifts for the sake of the Kingdom of God. He is sorely missed. During this season we have had some success with filling positions but one of the successes had to withdraw after two meetings and one position was never filled. This has left us with three open spots after Dave's death. This concerns me greatly for two reasons; we have repeatedly put out the call for those who may be interested to speak to us, and have had little interest and the group of us who are members of the executive are almost all in retirement or of retirement age. We need some of the younger pastors and laypersons of our Association to take us the challenge, PLEASE.

Over the past few years we have been emphasizing missional perspectives in an effort to help our people and churches become more missional in their thinking, ministry and programs. We are not giving up on that focus but we have also committed ourselves to becoming a church planting Association as an outcome of the missional focus. We are actively looking for a church planter for an outreach to the part of Winnipeg roughly bound by Portage, Notre Dame, Wall and Arlington. This ministry is to be the growth out of the ministry of Central that centered in this section of the City for so many years. At the present time, the building that was Central is being rented to several church groups and is paying its way with regular upkeep and maintenance being looked after by one of the former members of Central. Please pray with us for the right person or persons to fill this role. At present we have found that folks from outside our area seem afraid to come to "Winterpeg". Perhaps God is saying that this person needs to be a home grown person who loves both the climate and people of Winnipeg. The apostle Paul had times when he felt misunderstood, unfairly treated, and unappreciated but he took great consolation in the wisdom and guidance of Almighty God. We do the same. God is not finished with the Manitoba

Baptist Association and I feel that the best days are ahead. Let each of us pray fervently and openly asking God to reveal himself in creative ways to others through the ministries and programs of the churches and people of our churches. He is able. He is willing. He is ready.

Thanks for your support and prayers.

Dr. Barry Thiessen, Moderator, Manitoba Baptist Association



We budgeted a loss for the year ended December 31, 2015 and ended the year with a loss of \$10,850. We would have realized a gain about \$2,100 but an unbudgeted expense for West End Alive created the loss. I could have offset the West End Alive with monies from CEF but we have had surpluses for the past number of years and I choose to show the loss. We took over the operations and accounts of Central Baptist Church on January 1, 2015. You can see in the financial statement that we had a \$16,972 loss at Central. This was due to two projects that were approved in 2014 and were paid for from funds from Central. The loss is just a bookkeeping entry for information only. We budgeted for Church contributions amounting to \$77,191 and received a total of \$74,086.00. A schedule of contributions by Churches with comparative contributions for 2015 is included herein for your review. The contributions of our member Churches on an annual basis are vital and appreciated recognizing that we could not continue to function without the benefit of their support. The Association asks all member churches to donate 2% of your total income from your last fiscal year. If everyone did this, the association would receive about \$82,500. As we will have additional expenses due to the continuing weakness of the Canadian dollar we will have to ask our member churches for additional support this year over last. We have budgeted for a very small surplus this year.

Interest earnings on our CIF investments continue to add strength to the Church Plant Fund established in 2004. Fund balance at year end amounted to \$192,797. Please note that we moved some of the values from Long Term to Short Term in anticipation of the costs of new church planting activities.

Women's Ministries income amounted to \$23,117 compared to expenses of \$20,186. Our Women's Ministries is self-sustaining – not dependent on

Association for support.

Our operating expenses for the year were higher than anticipated at the outset. Excluding Women's Ministries our anticipated spending was \$91,528. Due to the legal costs from our By-Laws review and church planting costs we spent \$101,788.

Here is a breakdown of the variance on expenses for 2015 both budget and actual:

Expense Category	2015 Budget	2015 Actual
Donations – Other	700.00	0.00
Annual Conference Costs	4,000.00	3,981.00
Executive and General Council meetings	4,500.00	4,925.00
Office and general expense	8,500.00	6,347.00
Pastoral Support	3,000.00	2,872.00
Church Planting Activities	2,000.00	13,031.00
Youth Ministries – MBYM	1,000.00	0.00
Expended for Designated Ministries	1,000.00	0.00

BALANCE SHEET ON DEC 31, 2015

	2015	2014
ASSETS		
Cash	204,340	59,508
Short Term Inv. & Prepaid Expenses	77,926	126,325
Long Term Investments	155,372	187,345
Total Cash and Short Term Assets	437,638	373,178
CAPITAL ASSETS		
Land & Building	325,200	0
Total Assets	762,838	372,878
LIABILITIES AND NET ASSETS		
Accounts payable and accrued liabilities	2,383	2,383
Total Liabilities	2,383	2,383
Unrestricted Net Assets	760,455	370,795
NET ASSETS	760,455	373,178

STATEMENT OF INCOME & EXPENSES - 2015



	2016 Budget	15-08-31 Actual	2015 Budget	2014 Budget	2014 Actual
INCOME					
Church Contributions	77,623	39,966	77,991	75,000	74,997
General Fund Offerings	100	300	100	100	0
Womens Ministries	22,000	7,695	7,500	27,000	28,750
Youth Ministries ? MBYM	0	0	100	500	0
Church Planting Fund	30,000	0	0	0	0
Designated Offerings	1,000	0	1,000	1,000	582
Ministry Wives Retreat	2,000	0	0	0	2,030
Interest & Miscellaneous	4,800	1,245	6,500	6,500	7,149
Annual Conference	4,000	0	4,000	0	3,177
Total Income	141,523	49,207	97,191	110,100	116,686

EXPENDITURES					
Regional Minister	61,272	45,482	59,778	58,630	60,399
Donations (EFC, etc.)	750	0	750	750	0
AGM	4,000	299	4,000	4,000	2,313
Executive/General Council	4,500	4,160	4,500	4,500	4,128
Office & General	8,500	7,441	8,500	8,500	4,637
Pastoral Support	3,000	0	3,000	3,000	2,872
Ministry Wives Retreat	2,000	0	0	0	0
West End Alive	30,000	0	0	0	0
Church Planting Activities	2,000	50	2,000	2,000	0
Church Growth	0	0	0	2,000	0
Youth Ministries – MBYM	0	0	1,000	3,500	0
Womens Ministries	22,000	7,696	7,500	27,000	26,371
Pathway Camp Ministry	7,000	2,500	7,000	0	0
Designated Offerings	1,000	0	1,000	1,000	1,054
Total Expenses	146,022	67,629	99,028	114,880	101,774
Net Income (Expenses)	-4,499	-18,423	-1,837	-4,780	14,911

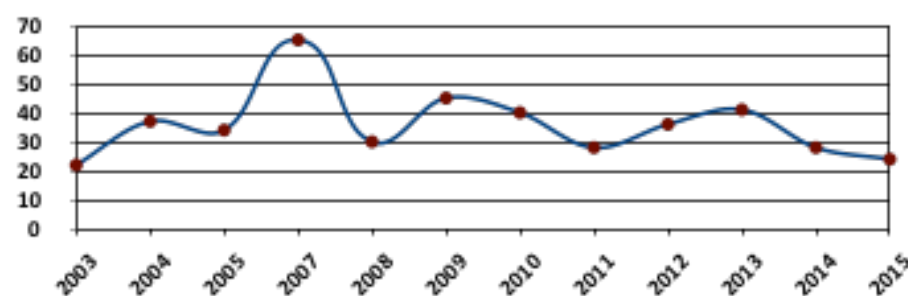
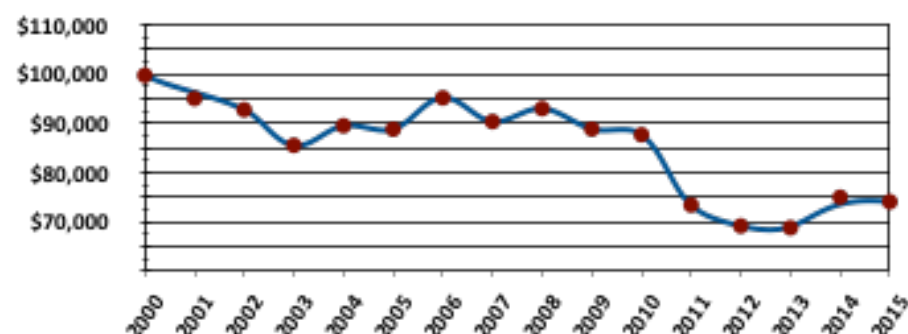
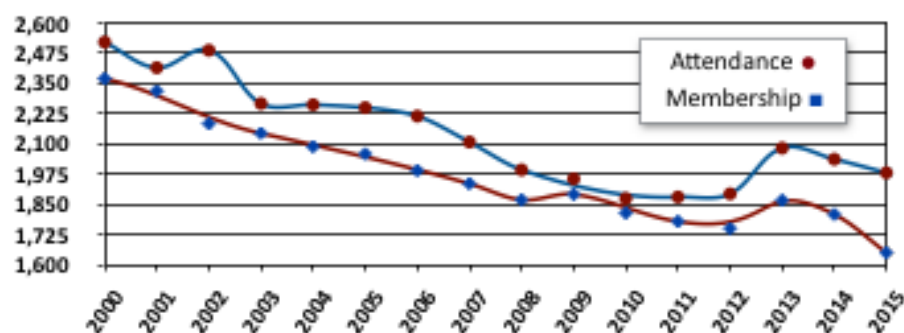
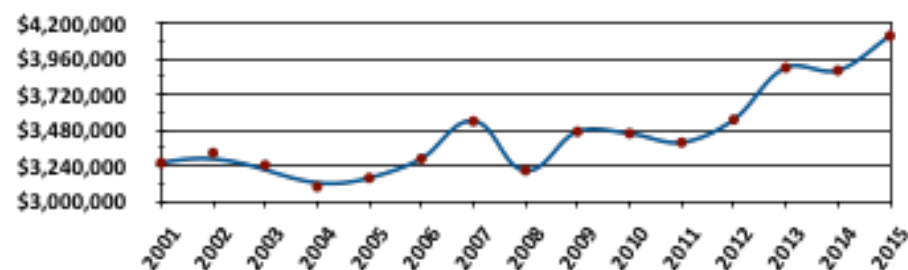
CONTRIBUTIONS TO THE ASSOCIATION BY CHURCH



The requested contribution for each church in 2017 is based on 2% of total church budget/giving reported for 2015. Any shortage in giving will be drawn down from MBA surplus funds.

Please consider making your contributions in quarterly installments.

CHURCH	2015 Revenue	2017 Goal	Given by 8/31/15	2016 Goal	2015 Goal	2015 Actual	2014 Actual
Abundant Life	160,296	3,206	0	2,686	2,437	2,000	2,000
Beausejour	77,231	1,545	0	1,632	1,382	1,200	1,200
Central						3,400	4,700
Fort Richmond	138,682	2,774	3,300	2,801	2,774	4,400	4,400
McDermot	381,974	7,640	0	7,932	7,932	7,000	6,903
Minitonas	211,122	4,422	2,000	3,860	3,860	4,000	4,000
Mission	272,380	5,448	2,475	3,649	3,649	4,550	4,500
Moosehorn	74,178	1,484	865	1,730	1,840	1,840	1,764
Morris	154,426	3,089	1,500	4,657	5,274	4,500	4,500
New Life Min.	88,220	1,764	1,276	1,276	1,296	1,296	1,265
Oakbank	241,879	4,838	2,250	5,190	5,078	3,000	4,860
Ochre River	180,117	3,602	0	3,847	3,847	4,000	4,000
Rowandale	549,640	10,993	9,435	9,400	9,129	9,250	9,000
Swan River	250,330	5,007	2,200	4,392	4,915	4,850	4,850
Waverley	399,296	7,986	2,000	8,263	8,263	4,000	2,160
Whitemouth	0	—	—	—	—	—	—
Whiteshell	184,079	3,309	3,300	3,309	2,352	2,500	2,995
Whyte Ridge	750,307	15,006	6,250	13,000	13,963	12,300	11,900
TOTAL	4,114,157	82,113	36,851	77,624	77,991	74,086	74,997

BAPTISMS 2003 - 2015**GIVING TO THE MBA 2000 - 2015****MEMBERSHIP & ATTENDANCE 2000 - 2015****TOTAL CHURCH GIVING 2000 - 2015**

2017 BUDGET PROPOSAL



	2017 Budget	8/31/1 Actual	2016 Budget	2015 Budget	2015 Actual
INCOME					
Contributions by churches	82,283	36,101	77,623	77,991	74,086
General Fund Offerings	100	0	100	100	
Women's Ministries – MBWM	22,000	16,469	22000	7,500	23,117
Youth Ministries – MBYM	-	0	0	100	0
Annual General Meeting	4,000	0	4000	4000	4,121
Pastor's Wives Retreat	2,500	1,775	2000	0	2,475
Interest & Miscellaneous	4,000	0	4800	6,500	6,715
Offerings for Designated Ministries	\$1,000	0	1000	1,000	610
Transfers from CEF for Church Planting	45,000	0	30000		
Total MBA Income	160,883	54,345	141,523	97,191	111,124

1061 ELLICE					
Rental Income	34,500				
Total 1061 Ellice Income -	34,500				34,124

Combined Total Income -	195,383				
--------------------------------	----------------	--	--	--	--

EXPENSES					
Regional Minister & Expenses	64,500	45,954	61272	59,778	60,147
Donations to other Charities	750	0	750	750	745
Program Com./Annual General Mtg.	4,000	0	4000	4,000	3,981
Executive & Council Meetings	3,500	340	4500	4,500	1,366
Office & General Expenses	7,500	595	8500	8,500	6,347
Pastoral Support	4,000	0	3000	3,000	3,519
Ministry Wives Retreat	2,500	0	2000	0	
West End Alive		0	30,000		
Church Planting Activities	45,000	0	2000	2,000	13,031
Regional Leadership Team	3,000	2,307			2,814
Youth Ministries – MBYM	3,500	1,500		1,000	0
Women's Ministries – MBWM	22,500	16,469	22000	7,500	20,186
Expended for Designated Ministries	1,000	0	1000	1,000	
Pathway Camp Ministries	3,500	0	7000	7,000	2500
Professional Fees	3,500	2,862	0		7,338
Total Expenses - MBA Operations	168,750	70,027	146,022	114,880	121,974

1061 ELLICE EXPENSES					
Operational Expenses -	29,334				
Total Expenses 1061 Ellice -	29,344				51,096
Net Income (Expenses)	-2,711	-15,683	-4,499	-4,780	-10,850

MEADOWOOD MANOR CHAPLAINCY REPORT



“I will sing of the mercies of the LORD forever; with my mouth will I make known Your faithfulness to all generations.” (Psalm 89:1)

As I was sitting down to prepare this report the words to the hymn “My Savior’s Love,” written by Charles H. Gabriel came to mind: “I stand amazed in the presence of Jesus the Nazarene, and wonder how He could love me, a sinner, condemned, unclean. O how marvelous! O how wonderful! And my song shall ever be: O how marvelous! O how wonderful! Is my Savior’s love for me!”

I am thankful for God’s amazing love, mercy and grace to me and for the privilege He has given me to proclaim this to others. I am so blessed to be able to share God’s amazing Love with those who call Meadowood Manor their home.



I want to thank you as a group of Churches for the privilege you have given me to serve as Chaplain at Meadowood Manor; as supporting Churches and individuals you have been faithful over these many years. Thanks also to those who support the ministry of Meadowood as they serve on various boards and committees. I wanted to give a special thanks to the Meadowood Manor foundation for their service in overseeing and providing the financial needs necessary to see the Chaplaincy ministry progress. Thanks also to the Chaplaincy Support Committee for their encouragement. I am also reminded of the Chaplains who have served here over the past 38 years and want to say thanks to them and their families (Walter Stein, Ed Hughes, Helmut Poschwatta and Ed Hamm).

Meadowood is a result of the vision and dedication of the MBA. Let me quote from the 30th Anniversary program that was printed for the Anniversary Dinner on June 19, 2008:

HOW IT ALL BEGAN – Meadowood Manor was a mere dream in the early 1970's of a dedicated group of Baptist Church members in Winnipeg. Their vision was to build a residential facility that would care for the elderly family members from our MBA conference, ministering to their physical, spiritual and social needs. In 1978 this dream became a reality, supported by NAB member churches, when Meadowood emerged as a place for our aging loved ones.

... Over the past 30 years Meadowood Manor has come a long way, and none of this would be possible without the generous support and contributions from the Manitoba North American Baptist Churches and the many volunteers who have given of their time and tithes.

We have seen changes – But God has continued to bless and use Meadowood to touch the lives of many. We are thankful for the work and commitment of our CEO (Laurie Cerquetti) and our current leadership team. The Board has just completed a new 5 year Strategic Plan. All of us want to continue to make Meadowood the “best little care home” in the city; the Spiritual care of all the residents and tenants is a valuable part of this.

Let me share a few highlights of the Chaplaincy ministry:

- 1) The Sunday Morning Service continues to be the center of our Spiritual ministry at Meadowood. We are seeing the Chapel & Fellowship Hall filled almost every Sunday. A Big thanks to all the special music, piano players and volunteers who serve to make Sunday Morning enjoyable for all who attend.
- 2) The Daily Morning Song with the residents is a special time each week day as I'm able to greet and visit with each one of the residents. Some residents need a word of encouragement, a smile, a hug and/or a short prayer for concerns they have.
- 3) I have been given the privilege of being in some of our NAB Winnipeg Churches to preach and share a little about Meadowood. I enjoy these opportunity and I'm always open to an invitation to come share. I've also been in a few other Churches in Winnipeg to share.

- 4) I have lately been asked to speak at a couple of the other Care Homes in the city. This is a good opportunity to share God's Word and encourage other seniors. It also makes me very thankful to be part of Meadowood.
- 5) We have various Bible Studies, fellowship times and other activities going on in both the Towers and Care Side. We are seeing new people come and getting involved. One of these studies (Inspiration For The Way) is lead by Emma; she has been so faithful in coming and encouraging the Residents with God's Word. One of the other studies is the German Bible Study that has been faithfully led for many years. They are now at a time where they need some help: If you or someone you know might be willing to help with the German study it would be greatly appreciated. Our German population looks forward to the studies "in German."
- 6) I am able to share very personally with most of the residents and tenants. They have concerns and / or questions about what they believe. I also have requests to pray for their friends, families and loved ones. I also have the opportunities to meet with staff.
- 7) I have led a couple of "Education sessions" on spiritual care.
- 8) This past year we had special Services for Remembrance Day, Christmas and Easter. We have continued to hold "Memorial Services" to remember those who have passed away.

So "THANK YOU" for volunteering, giving and encouraging the ministry here at Meadowood; you are making an impact for eternity. As I have shared several times, remember: Meadowood Manor is part of the "Mission Field" that you as NAB churches are very much involved in, as we reach out to seniors.

Thank you for praying for this important ministry and for my wife and me.

Submitted by Dave Holland, Chaplain of Meadowood Manor



To: Delegates to the Annual General Meeting of Manitoba Baptist Association Inc.
October 2016

Dear Brothers and Sisters:

Meadowood Manor Foundation Inc. is a Manitoba non-profit, charitable corporation whose purpose is fundraising in support of Meadowood Manor. The following are presently serving on the Foundation's Board of Directors:

Ed Bergstresser (Emmanuel), Allan Donald (Whyte Ridge), Helga Kahler (Rowandale), Anneliese Kunze (McDermot), Cheryl Liessens (Rowandale), Edith Matychuk (Rowandale), Norman Patzia (McDermot), Norman Piel (Whyte Ridge), Pauline Senior (Abundant Life) and Thomas Suffield (Whyte Ridge).

The Foundation's fundraising activities has two objectives:

Chaplaincy Program: The Foundation's primary objective is to raise all funds necessary to pay for Meadowood Manor's Chaplaincy Program. The Chaplaincy Program proclaims the truth, love and compassion of Jesus Christ on a full-time basis to all those who reside at Meadowood Manor, to all staff at Meadowood Manor, and to Meadowood Manor's community-at-large, which makes Meadowood Manor a tremendous mission field! Without the Chaplaincy Program, Meadowood Manor is just another seniors' residence.

Special Projects: The Foundation's secondary objective is to raise some or all of the funds required for various "Special Projects" that are undertaken to improve the Meadowood Manor facility, and therefore improve the lives of those who call Meadowood Manor "home". These Special Projects are initiatives that are either fully or partially funded by the Foundation, and are undertaken in consultation with Meadowood Manor's Chief Executive Officer, Laurie Cerqueti.

The continued generosity of donors allowed the Foundation to accomplish the following in support of its objectives over the past year:

- The Foundation once again provided full funding for Meadowood Manor's full-time Chaplaincy Program. The entire Meadowood Manor community is so blessed to be faithfully served by Chaplain Rev. David Holland, who is joined in his ministry by his loving and supportive wife Darlene.
- The Foundation held 3 very successful fund raising events: Chaplaincy Support Concert (October 24, 2015); the inaugural Bellissima Sera (Beautiful Evening) at DeLuca's Cooking Studio & Banquet Centre (February 13, 2016); and the Annual Fund Raising Dinner (May 26, 2016).
- The Foundation funded new signage for all the doors of all Resident Rooms in the Personal Care Home and also for all the "common areas" including outside the Chapel (\$9,315).
- The Foundation purchased a Specialized Therapeutic Air Mattress (\$2,660) for use by Personal Care Home Residents. This was a very special purchase by the Foundation. The Mattress purchase was motivated by a suggestion from a family member of a Resident. The Mattress is used for Residents that are at high risk for developing or who suffer from pressure ulcers. The Mattress is filled with air so it relieves any pressure points which would generally be a person's boney prominences. As well, it could also be used to increase comfort when Meadowood is providing end of life care and the Resident is very frail. These Mattresses are very expensive and the Winnipeg Regional Health Authority has a limited supply for distribution amongst Personal Care Homes, and there are very strict criteria that a Resident must meet in order to even qualify for being provided with such a Mattress. While some Residents have the financial means to purchase their own Mattress, the vast majority of Residents and their families cannot afford to do so. Having this Mattress allows Meadowood to fulfill its objective

of being guided by the compassion of Christ by providing immediate care and comfort to a suffering Resident, without being prohibited by bureaucratic limitations and the financial abilities of Residents and their families.

We thank our donors for their generosity in allowing our Foundation to achieve all of the foregoing for the benefit of those who live at Meadowood Manor.

We also thank the many volunteers and supporters from the churches of the Manitoba Baptist Association, and the churches themselves, for their continued support of Meadowood Manor's commitment to obey Jesus Christ's teaching to compassionately care for our elderly.

Norman Piel, President & Board Chair
on behalf of the Board of Directors of Meadowood Manor Foundation Inc.



Once again women maxed out the facility at Elkhorn as they gathered to fellowship and worship together, inspired by the words and singing of Joan Van der Linde and her daughter. Although Moosehorn Baptist was supposed to receive the 2 free registrations to attend the Women's Retreat at Elkhorn, they chose to trade with New Life Ministries and defer their free registration until 2017 to allow them to send their new pastor's wife. It is a blessing to see the free registrations, which MBA Women's Ministry sponsors through the contributions of our women, being so thoughtfully utilized. In addition to the 2 free registrations which are assigned to a MBA church on an alphabetically rotating basis, we continue to offer financial assistance to a maximum of two registrations to someone in need and whose church cannot provide assistance. It has been evident at our retreat that age and finances need not be a barrier to attending. This past year the age range extended from 5 babies (who came with their moms) to ladies in their 80's.

Our retreat committee, consisting of:

- Lisa Bater
- Shirley Wynne
- Rhea Jenkinson
- Grace Elke
- Evelyn Bredin
- Judy Hart
- Perla Turner

They did an exceptional job in planning the retreat and adding the special touches that make each woman feel blessed and grateful for the opportunity to attend. Helen O'Neill has joined the team and is assisting with planning the 2017 retreat.

We had come to rely on Dave Henkleman for setting up on-line registration for our retreat. Thank you to Denise Crosbie for volunteering to step in and enabling us to again provide online registration. The many people who willingly use the gifts God gave them to bless this ministry and make the retreat a success, confirms

how God makes all things work together. The stories of how God has transformed women's lives as they were ministered to in this setting deepens our commitment to continue providing this retreat.

The partnership opportunities we have locally and globally through our Outreach projects, listed in the financial report, allow us to expand our perspective of God's Kingdom at work. New for our 2017 budget is a \$1000 donation to Taylor Seminary – Bursary fund. Becky Hilbich, in her position with Taylor Seminary, has committed to being a liaison with MBA WM to inform us of recipients of this bursary. She ensured we received letters from the 3 women who received bursaries last year. As the women's letters expressed their appreciation for the bursaries, we were encouraged by the opportunity we had to invest in the ministries these women have embarked on. We thank our ladies for their continued stewardship awareness and generosity in supporting our Outreach projects.

The men and women in attendance at our Mission Brunch, March 5, 2016 at Whyte Ridge Baptist Church, were captivated by Tony Dunaway's passion for his work with Every Orphan's Hope in Zambia. It was a privilege to be able to support this ministry.

We thank First Baptist church in Minitonas for hosting the Women's Ministry luncheon last fall and their pastor's wife, Marianne Black, for sharing her faith story.

Many thanks to our faithful WM leadership team:

- Rita Mueller – secretary
- Evelyn Bredin – treasurer
- Rhonda Keppler – Missions Co-ordinator
- Members at Large: Grace Elke, Dorothy DeVries, Beth Gust

In addition, Dale Fast, from Whyte Ridge Baptist, has become a new member of the NAB WM Leadership Team. As such, she joined our last MBA WM leadership team meeting where we discussed strategies to facilitate the NAB WM leadership team in serving and connecting in a more meaningful way with local women's ministry groups. We look forward to continuing to work together.

Please prayerfully consider joining the MBA WM team. It is an opportunity to be stretched as we live for the legacy of Christ while communicating the story of our God and making room for the Spirit to work intimately in the hearts and lives of the people God brings in our way.

We have been blessed and privileged to be part of God's service in joining together as women to support and encourage other women in ministry.

Respectfully submitted,
Daphne Keck,
Coordinator MBA WM

WOMEN'S MINISTRY BUDGET 2017

CATEGORY/DESCR.	2017 Budget	2016 Budget	2015 Actual	2015 Budget
OUTREACH MINISTRIES				
Carol Potratz			\$1,000.00	\$1,000.00
Mayette Ativo-Bueno - Philippines	\$1,000.00	\$1,000.00	\$500.00	\$500.00
Lake Nutimik - Staff Scholars.			\$2,000.00	\$500.00
Nab Conf Wm	\$500.00	\$500.00	\$500.00	\$500.00
Taylor Seminary - Bursary	\$1,000.00			
Wellman Lake Bible Camp			\$2,000.00	\$500.00
Retreat Sponsorship	\$500.00	\$480.00	\$354.00	\$480.00
TOTAL OUTREACH MINISTRIES	\$3,000.00	\$1,980.00	\$6,354.00	\$3,480.00

EXECUTIVE				
Miscellaneous	\$50.00	\$50.00		\$50.00
Postage/Stationery	\$50.00	\$50.00		\$50.00
Travel	\$1,000.00	\$1,000.00	\$300.00	\$1,200.00
TOTAL EXECUTIVE	\$1,100.00	\$1,100.00	\$300.00	\$1,300.00

LEADERSHIP				
Female Church Leader Appreciation	\$200.00	\$200.00	\$206.25	\$200.00
TOTAL LEADERSHIP	\$200.00	\$200.00	\$206.25	\$200.00

MBA WM AGM				
Speaker Honourarium	\$350.00	\$350.00	\$50.00	\$350.00
Miscellaneous	\$50.00	\$50.00		\$50.00
TOTAL MBA WM AGM	\$400.00	\$400.00	\$50.00	\$400.00

MISSION EVENTS				
Speaker Honorarium	\$500.00	\$500.00		\$200.00
Hosting	\$1,200.00	\$1,200.00		\$800.00
TOTAL MISSION CONFERENCE	\$1,700.00	\$1,700.00		\$1,000.00

RETREAT				
All Workshops	\$200.00	\$350.00	\$150.00	\$350.00
Venue	\$13,000.00	\$12,000.00	\$10,093.65	\$11,500.00
Speaker	\$3,000.00	\$1,400.00	\$1,699.18	\$2,500.00
Worship	\$450.00	\$450.00	\$666.68	\$850.00
Special Touches	\$750.00	\$750.00	\$640.58	\$600.00
Team Meetings (Travel/Conference Calls)	\$300.00	\$300.00		\$300.00
Publicity/Promotion	\$300.00	\$300.00		\$300.00
Miscellaneous	\$100.00	\$150.00	\$25.41	\$150.00
TOTAL RETREAT	\$18,100.00	\$15,700.00	\$13,275.50	\$16,550.00

TOTALS	\$24,500.00	\$21,080.00	\$20,185.75	\$22,930.00
---------------	--------------------	--------------------	--------------------	--------------------

WOMEN'S MINISTRY INCOME/EXPENSES



CATEGORY/DESCR.	2015	2016
EMMANUEL BAPTIST (Morris) Cheque dated 28/12/2015 rec'd in Jan.2016	\$600.00	\$250.00
GRACE BAPTIST (Ochre River)	\$300.00	\$300.00
TEMPLE BAPTIST (Swan River)	\$200.00	
TOTAL - CHURCHES	\$1,100.00	\$550.00

BANK - Interest	\$5.68	\$0.64
TOTAL	\$5.68	\$0.64

Book Table - Retreat	\$58.05	\$85.00
Workshop Income (Fashion Follies)		\$100.00
Silent Auction - Retreat	\$835.00	\$1,140.00
TOTAL - Miscellaneous	\$893.05	\$1,325.00

ANNUAL MEETING	\$1,550.00	
MISSION CONFERENCE		\$380.00
RETREAT	\$2,450.00	\$2,305.00
TOTAL OFFERINGS	\$4,000.00	\$2,685.00

MISSION CONFERENCE		\$180.00
RETREAT (Includes \$240.00 from Sponsorships)	\$12,933.96	\$15,113.84
TOTAL REGISTRATION	\$12,933.96	\$15,293.84

TOTAL INCOME	\$18,932.69	\$19,854.48
---------------------	--------------------	--------------------

EXPENSES	\$20,185.75	\$18,423.16
PROFIT / (LOSS)	-1253.06	\$1,431.32

Recap		
Bank Balance Dec 31/15		\$13,822.52
Expenses 2016		
Expenses - Prepaid 16 for 2017 speaker (deposit)	\$300.00	
Income 2016		
Bank Balance - Dec 31, 2016		



1219 Pleasant Grove Blvd., Roseville, CA 95678
Tel: 916-797-6222 | serve@nabconf.org | www.nabconference.org

**Report from the Executive Director
North American Baptist Conference
Fall 2016**

Greetings and Blessings

Greetings from the North American Baptist Conference and the staff of the International Office in Roseville, California. I pray that this season finds you abiding deeply in the leading and directing of the Holy Spirit as He empowers all of us for sanctification and ministry.

Here are some important happenings in the life of the North American Baptist Conference:

NAB Strategy Team Meetings

In my spring communique, I reported that the NAB Strategy Team had met to consult on future directions for our conference of churches. At those meetings in Tucson, Arizona, this Strategy Team reviewed and affirmed eight strategic priorities and focused attention on three of them to invest significant time, energy, and resources in for the coming twelve to eighteen months. Those three strategic priorities included 1) continued training to help NAB churches engage in missional ministries; 2) a renewed emphasis on church planting and multiplication across the conference; and 3) new initiatives that assist church leaders, especially pastors, to become more deeply formed spiritual leaders.

At the end of the meetings, there was a unanimous agreement that the time together was overwhelmingly effective, that a new sense of unity had been birthed in the NAB family, and that each leader present would advocate strongly for these priorities in their spheres of influence.

In July, this strategy group convened again just outside of Calgary, Alberta, specifically to discuss how the International Office and each NAB region can initiate church planting and ministry multiplication strategies. The Strategy Team also invested time in dialogue regarding the highest purposes ("Ends") of the conference. The report of this discussion will be passed to the NAB Executive Committee, who is responsible for designating and describing the Ends of the NAB. Finally, the Strategy Team discussed issues of racial reconciliation and racial righteousness.

NAB International Office Staff

The International Office announced last year that Kent Carlson had been hired as NAB's vice president of Leadership Formation. Kent joined the NAB staff in January 2016 in a new part-time role, pioneering leadership formation. Kent is a familiar name in the NAB family, having founded Oak Hills Church in Folsom, California, in 1984, where he continues to serve as co-senior pastor. Kent is also the co-author of *Renovation of the Church: What Happens When a Seeker Church Discovers Spiritual Formation*. It is my privilege to announce that as of September 1, Kent will move from part-time to full-time status.

Also, Bud Fuchs and Randy Schmor have joined the International Office staff. We have restructured our department so that we can better serve our churches in their participation in Great Commission ministries, both overseas and at home. Gateway has been redesigned to be more effective in equipping churches for long-term partnerships overseas, and we have added Bud Fuchs to the team to help churches reach the international communities that have come to our neighborhoods. Both of these men are here to serve your church.



Triennial

The 2018 Triennial will be held in Edmonton, Alberta, on July 26–29, 2018. The main session will be held at the Shaw Centre in downtown Edmonton. Conference hotels are currently being negotiated. The Alberta Baptist Association regional minister, Dr. Jim Leverette, is working to convene a local arrangements committee that will help guide the Edmonton aspects of this Triennial.

Missionary Sending and Supporting

In the past six months, the North American Baptist Conference has recruited and accepted a number of new missionaries to serve God around the world on behalf of NAB churches. Please continue to pray for the following missionaries:

- Jeff and Sonya Kilmartin, Ndu Seminary / Fulbe ministry in Cameroon, currently raising support
- Ken and Rachelle Johnson, covering missionaries on home assignment in Japan, departing late August
- Vern and Gloria Wagner, Camp Falcon Rock development in Romania, currently raising support

We praise God for leading these couples into international missionary service. Please pray for their raising of financial support. The needs they are meeting are critical and time sensitive. Ask God to provide churches and individuals to support these missionaries immediately.

Reach Initiative—Capital Campaign

At the 2015 Triennial, it was announced that the NAB would launch a capital campaign, uniting the NAB family “on mission together” to focus our hearts and minds on a number of North American and international projects. These projects will expand the NAB’s ministry scope for decades to come.

Materials have been distributed and donor visits are underway by leaders from the NAB Foundation, Sioux Falls Seminary, Taylor College and Seminary, and international fields, as well as myself and various staff here in the International Office. I am overjoyed by this unprecedented level of collaboration and unity among our partners to do together what we could not do alone. Please pray for this new campaign, and be looking for information in the coming months on how you can be involved with gatherings in a city near you.

Thank You

Thank you for your prayers and encouragement for the leadership of the International Office over the last months. God is truly leading us toward a new season of expanding ministries and unique opportunities. May He continue to unite our hearts and minds.

As we move forward together as an NAB family, please let us know how we can serve you even better. Please reach out to me at dhamil@nabconf.org.

In His overwhelming grace and peace,

Dan Hamil
Executive Director

CHURCH INVESTORS FUND REPORT



Greetings and Blessings

Greetings from everyone here at Church Investors Fund, and blessings to you, the church, and the communities you faithfully serve. We pray for you regularly and will continue to do so in the coming year.

Our biggest need in the coming year is for new investments to allow us to meet the ever growing loan demand.

Health of the Ministry

2015 was another good year for Church Investors Fund. Our equity continues to grow at a healthy rate. God has continually showed His faithful hand at the helm, steering Church Investors Fund so that we can continue in our faithful service of building His Church.

We Need Your Help

The biggest challenge we face is sharing the Church Investor Fund ministry with your church body. We regularly receive phone calls and emails from individuals that are in our churches, who have the heart to help build churches, but they never knew we existed. You can help us with this problem by sharing our video on a Sunday morning. The video is under 2-minutes in length.. Call or e-mail to request a USB drive or an online link to our video. It will make a difference! Thank you!

Thank You!

Thank you to our investors! The funding of building projects were made possible by these people in our churches who decided to entrust a portion of their savings to Church Investors Fund and invest in making an eternal difference in God's Kingdom.

Questions? We are Ready to Serve!

President - Les Collins *235

Marketing - Bob Glim *230

Accounting - Igor Mokhov *236

Loans - Jim Harmon *246

Investments (US) - Carolyn Kellogg *231

Investments (Cdn) - Peggy Toranzo *238

General Questions - Ellie Pond *233

Your brother,

Bob Glim V. P./Marketing

www.ChurchInvestorsFund.org

WELLMAN LAKE BIBLE CAMP REPORT

GOD IS GOOD! We had a great summer this year with around 150 campers attending camps from Pre-Squirt (5 years old) to Youth (18 years old). As well, two new camps were implemented: a couples retreat and a family camp. While both of these were new to us, which made planning more of a challenge, the success and feedback we received made it evident we are on the right track.

The theme for this year was Living Water and Rachel Dahl was again our director. While many of our counsellors are younger in age, we are so blessed by their quality, maturity level, and desire to bring the Gospel to the campers. We had amazing speakers that wanted to take the time to interact and get to know the campers. Having a maintenance man on site kept things running smoothly and it was suggested that we rehire our head cook on at least a 15 year contract. Wonderful kitchen helpers made food preparation a huge success. Our lifeguard went above and beyond by helping to fill in wherever needed.

As you can tell, I am truly thankful for the wonderful staff and workers that God brought together to touch hearts and lives with the message of Jesus Christ. To hear some of the background stories of how these individuals all came into place is nothing short of amazing.

From the facilities side we are blessed to have such a wonderfully functioning site. We added a portable climbing wall and are in the process of rebuilding the ropes course, which helps to keep the activities fun, safe, and a highlight of the camper's experience. There are some future upgrades that are already being talked about and planned for.

Once again we are always looking for ways to widen our circle and have more campers experience God's love and forgiveness through one of the camps. Please continue to pray that we follow God's leading as we work to provide a Christian camping experience at WLBC in the future.

Lorne Muller



TAYLOR
SEMINARY • COLLEGE • E P WAHL CENTRE

Taylor College and Seminary
11525 – 23 Avenue NW,
Edmonton, AB T6J 4T3
Phone: 800-567-4988



2016 ASSOCIATION REPORT

message from the president

Ministry is changing in dramatic ways all across North America. While ministry opportunities multiply, ministry demands increase exponentially. We know that these changes are putting new and greater demands on those in leadership of all dimensions of church life. Taylor is here to help. In order to better prepare those called to give leadership during these demanding times; Taylor is redesigning our curriculum with a special eye to these changing needs.

Last year faculty redesigned our MTS curriculum to give students much greater flexibility in crafting a program that best suits their educational needs. We recently began a complete redevelopment of our MDiv curriculum by calling together a group of 12 seasoned pastors and ministry leaders to explore the current practice of pastoral ministry, and considering how we might best equip students to faithfully fulfil their call to ministry. We are very encouraged by what we learned, and hope to have our new curriculum completed and ready for initial implementation in 2017.

Our partnership with our brothers and sisters in Cameroon continues; In February, I returned to Cameroon (along with Greg Henson, President of Sioux Falls Seminary) for two weeks of meetings with CBC leadership and the leaders of the two CBC seminaries there (in Ndu and in Kumba). It has been both rewarding and exciting to be working together to strengthen theological education in our countries!

We are thankful for the resources God has faithfully provided throughout our 75 years of ministry. Like many of you, we find these days to be challenging financially. That being said, we know that God will continue to provide all the resources needed to do the things God has called us to do.

We covet your prayers as we seek to be good stewards of the resources God provides, and as we strive to find better ways to serve the churches of the NAB and God's Kingdom come to earth. Please know that our prayers are with you as well.

Shalom,

Dr. David Williams, President



what pastors are saying

"Overall it was great. I came tired, stressed, discouraged, uncertain about the future. Am leaving refreshed, renewed, peaceful, encouraged. **THRIVE** has provided a safe environment to engage with other pastors and leaders to dialogue about life and ministry issues."

*-Pastor who attended
THRIVE, a retreat hosted by
the E P Wahl Centre's
Healthy Pastor Initiative*

Latest News

New BRIDGE format praised

Taylor recently expanded the format of its magazine to include educational content (topics have included the refugee crisis and special needs and the church. Reader response has been strongly positive.

Seminary Enrolment Inquiries Jump Sharply

Prospective students have been contacting Taylor in significantly higher numbers in 2016. New and planned changes to our curriculum – to give students more flexibility in their programs – are one reason for the surge in interest.

Modest Deficit Budget Approved

The Taylor Board of Trustees has approved a budget that includes provisions to draw on institutional reserves to fund operations for the 2016-17 fiscal year.

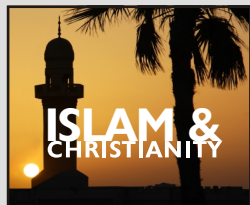


Photo: Taylor hosts Interfaith Dialogue, "Islam & Christianity"

Imam Sherif of Edmonton speaks during a discussion called Islam and Christianity, held at Taylor in April 2016. Andy Bannister of Ravi Zacharias International Ministries (centre) was the other featured guest, and Taylor prof Dr. Randal Rauser (left) served as moderator. Over 400 people attended.

How You can Be Part of All that God is Doing at Taylor

Taylor Seminary: One of the core priorities of Taylor Seminary is to provide a high-calibre educational experience that is available through a highly flexible system of course delivery.

Interested in a graduate program with a large degree of choice?

Check out our newly-revised Master of Theological Studies degree (48 credits)! Create a concentration of courses in your interest area with 15 credits of free electives.

Living in Edmonton but working during the days?

Check out our online courses, as well as our evening courses (Tuesday and Thursday nights). You can check the Timetable for a complete schedule of courses that might fit with your schedule:

<http://www.taylor-edu.ca/taylor/pdf/Timetable2016-2017.pdf>

Interested in graduate studies but money is tight?

- Alumni can audit a Taylor course for free.
- First-time students can take a Taylor course at half-price.
- *(contact Rick Heavenor for more details)*

Prayer & Praise Matters

- Praise for the new faculty and course delivery partnerships with Sioux Falls Seminary.
- Praise for the denominational diversity of our student body.
- Pray for our faculty as we continue a program and curriculum review.
- Pray for our many international students as they orient themselves to a new culture and to graduate level education.
- Pray for the unfolding partnership with the theological schools of the Cameroon Baptist Convention (involving Taylor and Sioux Falls Seminary).
- **Connect Online**

See our Facebook page at <https://www.facebook.com/TaylorUpdates> for current updates and pictures of the latest happenings.

See our website at <http://www.taylor-edu.ca> for in-depth information.

Know someone gifted in leadership? Recommend Taylor Seminary!

We're always excited to help students develop their ministry skills - encourage them to be in touch. Email: Rick.Heavenor@Taylor-Edu.ca



TAYLOR
SEMINARY

E P Wahl Centre

Dr. Ralph Korner – Director



Upcoming Events include:

Oct. 19 – Church Administrative Professionals Symposium

Join hundreds of church administrative staff members for a day of training and equipping and refreshing.

Oct. 21-22 – onWORD Conference

Rob Loane of VantagePointe3 will be our featured speaker as McKernan Baptist Church hosts the 2016 onWORD Bible Conference, "Keeping Company with God."

Nov. 5 – Overflow Worship Conference

Musicians and worship leaders gather for a day of specialized training and worship.

Feb. 8 – Turbulence: Navigating Church Conflicts with Grace (One-Day Workshop)

The 2016 event was sold out – Register early with the ministry team from your church!

Visit www.taylor-edu.ca/events

White Cross Shipment

This year, two shipments of supplies have been sent to Cameroon: baby blankets, flannel diapers and jackets (layettes), collected and donated medical supplies and equipment, and rolled bandages.

For more updates, send an email to WhiteCross@Taylor-edu.ca.

DID YOU KNOW?

- A colourful new White Cross booklet is available for you to distribute to volunteers within your church - No charge!

- Two White Cross promotional videos were produced in 2015 - great to share in your Sunday morning services. Ask for details!



Sabbatical Preparation Workshop Testimonial – Dr. Harry Kelm

"One of the blessings that I have received in my current church is the gift of a Sabbatical. Not having had a chance to experience this before I went to a workshop offered by the E P Wahl Centre on Sabbatical Preparation. This workshop helped me think through the ways to make effective use of the time found in my three month Sabbatical. It highlighted best practices in helping me establish the different areas that I felt God wanted me to concentrate on during my Sabbatical. I saw the workshop as an integral part of how God shaped me and the time away from the ministry of the church for the ultimate good of the Kingdom of God. The workshop was useful and something I would recommend to others."

Sabbatical Preparation Workshop | February 15, 2016



2100 S. Summit Avenue, Sioux Falls, SD 57105 | www.sfseminary.edu | info@sfseminary.edu

PROGRAMS

GRADUATE AND CERTIFICATE

Graduate Programs

- Doctor of Ministry
- Master of Divinity
- Master of Arts in Christian Leadership
- Master of Arts in Counseling
- Master of Arts (Bible & Theology)
- Graduate Certificate in Theological Studies

Certificates

- Training in Spiritual Direction Certificate of Completion
- Certificate in Christian Ministry

STATISTICS

SPRING '16 ENROLLMENT



Total Headcount 300
approximate total students per academic year

Average Age 41
students in all programs

Students in Programs 201

Denominations

Baptist	30%
Reformed	19%
Lutheran	16%
Wesleyan/United Methodist	9%
Non-Denominational	13%
All Others	13%

THEOLOGICAL EDUCATION IN A NEW TIME



Greg Henson, President

In his book *Earthen Vessels*, Dan Aleshire, Executive Director of the Association of Theological Schools, refers to 2 Corinthians 4:7 as a pivotal verse in his understanding of the role of theological education. In the introduction to the book, he writes about how he used that verse in the beginning of a course he taught called "Formation for Christian Ministry." A concluding statement he provides for one paragraph reads, "A jar has value only to the extent that it fulfills its function. Ministry is like that – and this is Paul's point. Ministry is never about the minister; it is always about the gospel the minister proclaims."

He goes on to say that theological education is also like an earthen vessel or a clay jar. It is durable and fragile, perfect for a given use, but also imperfect. Perhaps his most intriguing statement is, "Earthen vessels, unlike wineskins, can hold both new wine and old wine. At a time when change is a dominant characteristic of religious life in North America, it is reassuring that a resource, like a vessel, that served in one way in an earlier time can serve in another way in another time."

The challenge and opportunity set before us today is to "serve in another way in another time." Theological education in North America is undergoing significant levels of change. Some of these adjustments address areas within our system that are in dire need of change (like the price of tuition). Other adjustments are attempts to retain the important essence of theological education or to preserve important pieces of history. There is value in each approach.

As Sioux Falls Seminary continues on its remarkable journey of transformation, we do so with a robust understanding of 1) the changing landscape of the Church in North America, 2) the characteristics of the schools who are committed to theological education, and 3) the modifications to our system that are coming as a result of the perceived disconnection between the Church and theological education.

The treasure we have in clay jars, the gospel of our Lord, deserves to be handled with care and intentionality. In doing so, followers of Christ are able to create a fresh expression of ministry, an expression of what it looks like to be on mission with God. As a seminary, we are called to provide a system of theological education that facilitates such a reality.

**JOIN US
IN MISSION**

video: sfseminary.edu/joinus

Look for Sioux Falls Seminary on [twitter](#) [facebook](#) [YouTube](#) or visit our website www.sfseminary.edu.

WAYS TO JOIN US

- Encourage the individuals that God has gifted for service in his kingdom to consider theological education.
- Support Sioux Falls Seminary as we develop servants for their participation in the kingdom mission.
- Pray for the exciting work God is doing in and through Sioux Falls Seminary and for continued opportunity to partner with our NAB family. We've already been blessed to serve alongside the Conference office, Cameroon Baptist Convention, Taylor Seminary, and Forge Canada.
- Attend an event, consider taking a class, or enroll in a program.
- Join us as we follow God into mission. You're an integral part. It will be great to have you on the journey with us.



WALKING BOLDLY INTO MISSION

EXCITING NEWS AND ACADEMIC DEVELOPMENTS AT SIOUX FALLS SEMINARY

the kairos project

The Kairos Project, an alternative path within the Master of Divinity and M.A. in Christian Leadership programs, gives students the opportunity to focus on the achievement of outcomes while serving in ministry and walking alongside a team of mentors and faculty. The Kairos Project is academically challenging, and it fully integrates the life and ministry of a student. Currently, there are around 45 students enrolled in the Kairos Project.

doctor of ministry degree

Do you feel called to grow in your ministry competence? Explore the Doctor of Ministry program at Sioux Falls Seminary. It's a great opportunity to experience challenging learning opportunities, engagement with your peers, and participation in self-directed study.

degree program updates

M.A. in Christian Leadership (MACL)
A redesign of the MACL adjusted the program to 37 hours and enhanced core theological foundations. Students can build custom concentrations.

M.A. in Counseling (MACO)

An updated MACO is providing an increased number of licensure opportunities and provides students for service in area such as marriage and family therapy, child and adolescent behavior, and mental health counseling.

M.A. (Bible & Theology) (MABT)

An enhanced MABT program begins Fall 2016. In addition to a redesigned course of study and updated learning outcomes, the MABT now allows students to focus their learning and specialization in an area of choice.

certificate programs

We offer two certificates that provide enrichment in specific areas of ministry.

Training in Spiritual Direction

Filling a unique need by providing specialized training to individuals who accompany others on their life journeys—whether sacred or secular, this two-year, 16 credit-hour program, is offered in Sioux Falls and online.

Certificate in Christian Ministry

This five or ten course certificate offers students the ability to concentrate their studies in a specific area of Christian ministry. Students are encouraged to choose the certificate plan that best matches their educational background and prior ministry experience. With the help of an advisor, individualized plans are developed for each student.

THE FUTURE OF THEOLOGICAL EDUCATION

